

# PUBLIC EXPOSE

PT Abadi Nusantara Hijau Investama Tbk

04 December 2025



## Disclaimer

This presentation has been prepared by **PT Abadi Nusantara Hijau Investama Tbk** (the “Company”) solely for the purpose of the Public Expose. By receiving or participating in this presentation, recipients agree not to reproduce, distribute, or disclose its contents without prior written consent. Any unauthorized use or publication is strictly prohibited.

In addition, the information contained in this material may include forward-looking statements that reflect the Company’s current views with respect to future events and financial performance. These views are based on actual estimates and assumptions that are subject to business, economic, and competitive uncertainties and may change over time and, in some cases, are beyond the control of the Company and its Directors. No assurance can be given that future events will occur, that projections will be achieved, or that the Company’s assumptions are accurate. Actual results may differ materially from those anticipated or projected. The financial statements presented are the most recent ones available.

This material does not constitute an offer or solicitation to buy or sell any type of financial instrument. No representation or warranty, express or implied, is made with respect to the accuracy, completeness, or reliability of the information contained herein, and this material should not be regarded as a complete or comprehensive statement of capital market developments. This material should not be used as the basis for any decision to buy or sell any type of financial instrument. Any opinions contained in this material are subject to change without prior notice and may differ from, or even contradict, opinions expressed by other business units or subsidiaries of the Company as a result of the use of different assumptions and criteria.

# TABLE OF CONTENTS

**01**

**Business Overview &  
Key Updates**

**02**

**Future Strategy**

**03**

**Financial Performance**

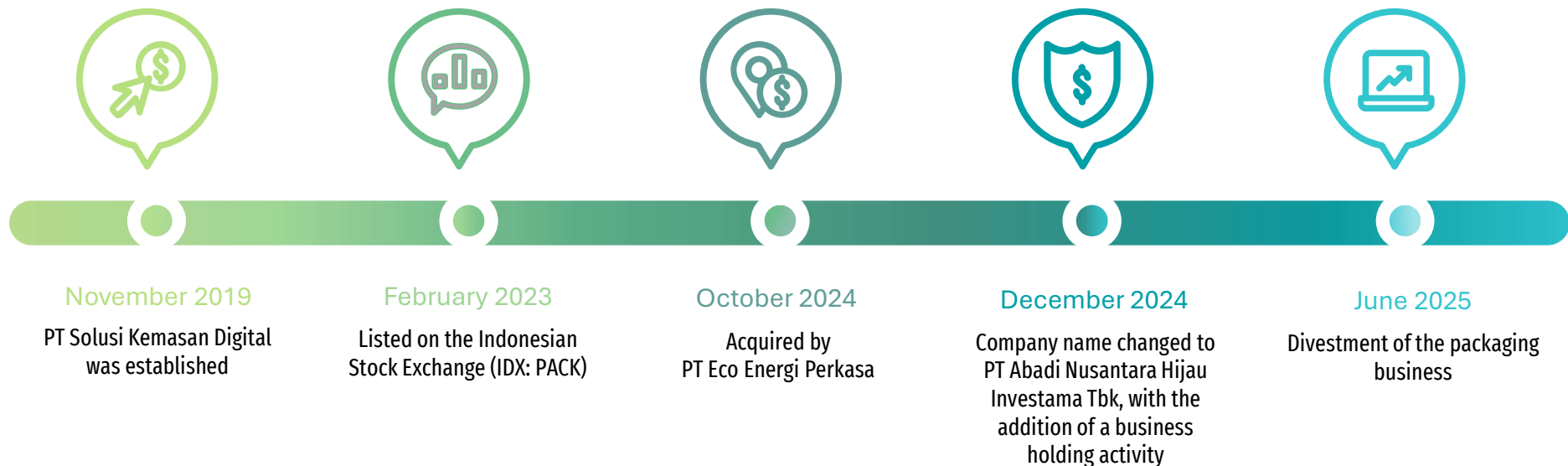
# Business Overview & Key Updates

01  
ONE



## Business Overview

PT Abadi Nusantara Hijau Investama Tbk (“ANHI”) is a publicly listed company (IDX: PACK) based in Indonesia, strategically evolving from its origins in packaging to become a dynamic investment holding company. Through its five subsidiaries, ANHI is actively expanding its footprint in the high-growth nickel trading and mining sectors, positioning itself at the forefront of Indonesia’s critical mineral industry.



## Recent Developments

ANHI – through its subsidiaries – has acquired minority stakes in PT Konutara Sejati and PT Karyatama Konawe Utara, two prominent nickel mining companies located in Kabupaten Konawe, Indonesia. This strategic acquisition supports resource expansion and feedstock supply that enables future integration with midstream operations.



**PT Karyatama  
Konawe Utara**

**Location:**  
North Konawe,  
Southeast Sulawesi

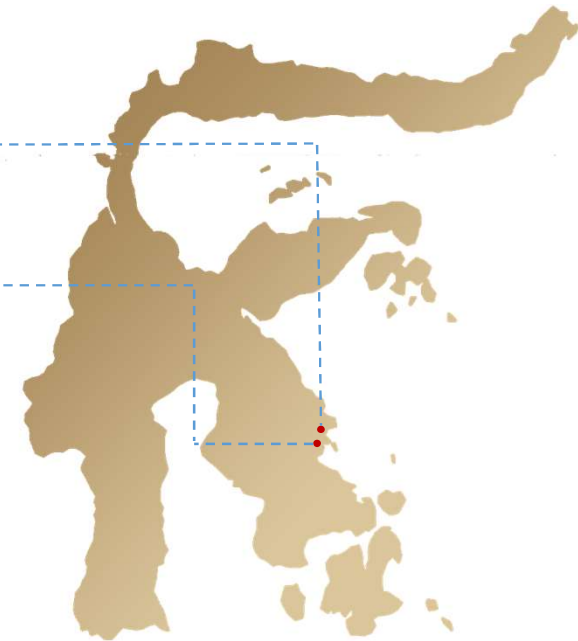
**Area:** 3,119 hectares



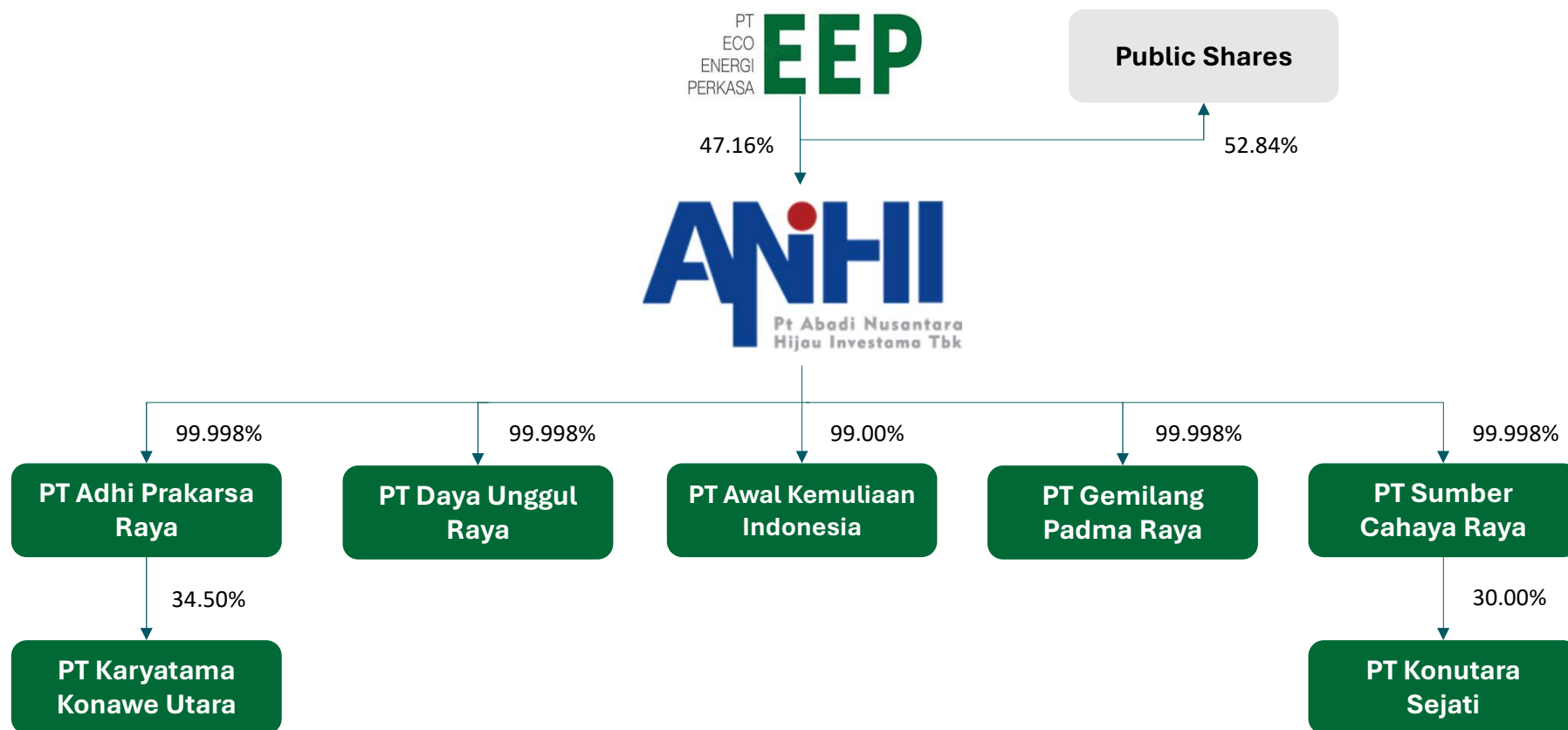
**PT Konutara  
Sejati**

**Location:**  
North Konawe,  
Southeast Sulawesi

**Area:** 1,923 hectares



# Ownership Structure



# Management Team

## Board of Commissioners



**Fu Pei Wen**  
President Commissioner



**Drs. Endang Sutisna**  
Independent Commissioner

## Board of Directors



**Magdalena Veronika**  
President Director



**Frans Raida**  
Director



**Zhu Jiang Jian**  
Director

# TABLE OF CONTENTS

01

**Business Overview &  
Key Updates**

02

**Future Strategy**

03

**Financial Performance**

# Future Strategy

02  
TWO



# Future Strategy

## 1 Strengthen Upstream Positioning through Targeted Acquisitions

Accelerate resource security by acquiring additional mining assets with strategic reserve potential



## 2 Increase Production Capacity in Existing Upstream Operations

Optimize mine output through operational improvements and expansion of high-potential zones



Future Strategy

# TABLE OF CONTENTS

01

**Business Overview &  
Key Updates**

02

**Future Strategy**

03

**Financial Performance**

# Financial Performance

03  
THREE



## Financial Performance

	9M2025	9M2024	Growth
<b>Net Sales</b>	47.5	32.2	47%
<b>Gross Profit</b>	<b>1.5</b>	<b>7.9</b>	<b>-81%</b>
<b>Gross Profit Margin</b>	3%	24%	
<b>EBIT</b>	27.6	0.8	-3443%
<b>EBIT Margin</b>	58%	-3%	
<b>Net Profit</b>	<b>8.2</b>	<b>1.9</b>	<b>-527%</b>
<b>Net Profit Margin</b>	17%	-6%	

Note: IDR in billion

## Financial Performance

	9M2025	FY2024	Growth
<b>Total Assets</b>	2,923.2	66.9	4268%
<b>Total Liabilities</b>	2,838.2	9.1	30,981%
<b>Total Equity</b>	85.0	57.8	47%

*Note: IDR in billion*

# Thank You

**PT Abadi Nusantara Hijau Investama Tbk**  
Noble House 31<sup>st</sup> Floor  
Jl. Dr. Ide Anak Agung Gde Agung Kav. E 4.3  
Mega Kuningan, Setiabudi  
South Jakarta 12950, Indonesia



[anhinvt.com](http://anhinvt.com)



[corsec@anhinvt.com](mailto:corsec@anhinvt.com)